

# Memory

F. Meyniel

Cogmaster CO7 2012

# introduction



A definition: “memory is a function that permits animals and people to acquire, retain and retrieve many different kinds of information”.

David Sherry & Daniel Shacter, 1987, Psychological review

# Introduction: different characterizations of memory



Remember a flashed image  
**Iconic memory**



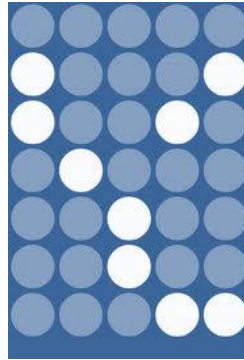
Need to borrow  
**working memory**



Remember your trip  
to Tunisia last  
summer  
**Long term memory**

**Time scale**

# Introduction: different characterizations of memory



Where is Tunisia?  
**Semantic knowledge**

Have you been to Tunisia?  
**Episodic memory**  
**explicit**

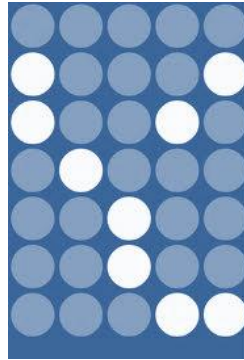
Do manage with music?  
**Motor skills**  
**implicit**

The content of the memory

# Introduction: different characterizations of memory



Consolidating



Encoding



Retrieving



# Methodological issues: neuropsychology

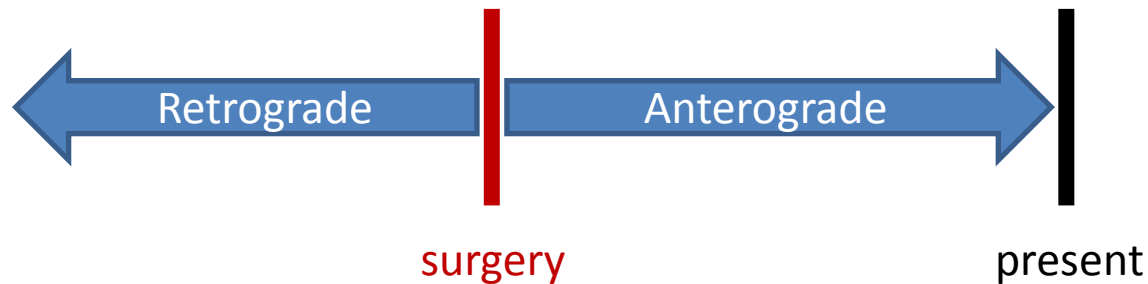
- Patient HM: William Scoville & Brenda Miller



Removed: bilateral amygdala, hippocampal formation and part of the association areas of the medial temporal cortex

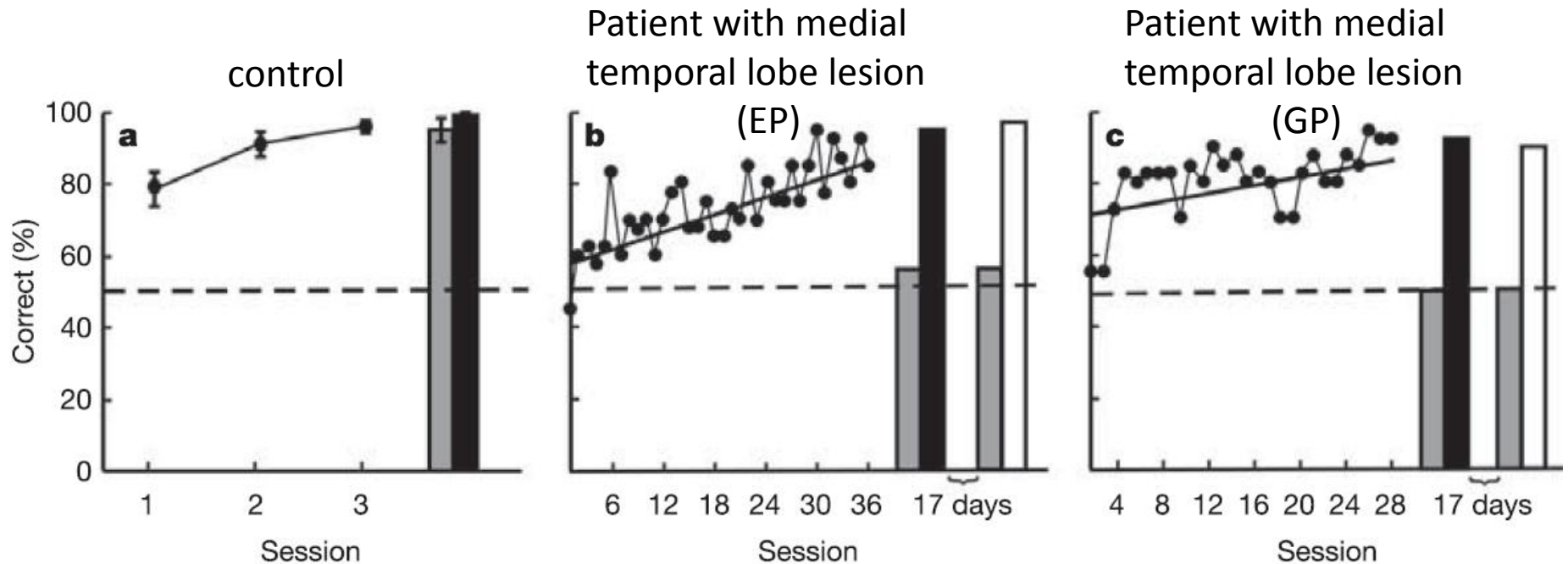
# Methodological issues: neuropsychology

- HM: anterograde amnesia + limited retrograde amnesia





# Methodological issues: neuropsychology



Task: learn to pair items verbally

Black/white: sort item verbally (as during training)

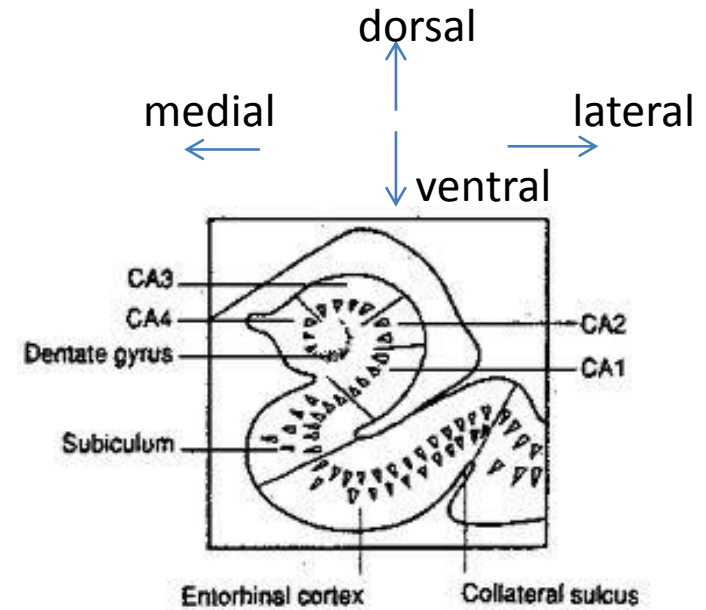
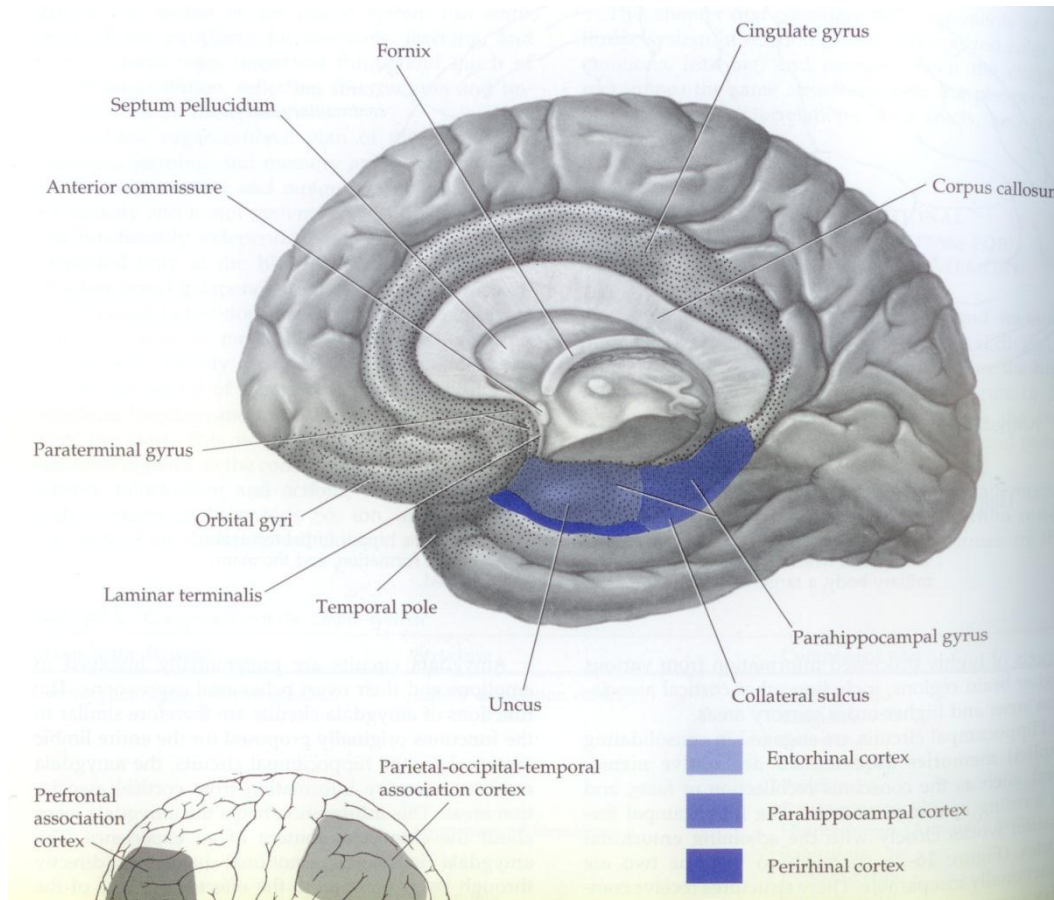
Grey: sort item presented as card (explicit generalization)

Bayley, Frascino, Squire Nature 2005



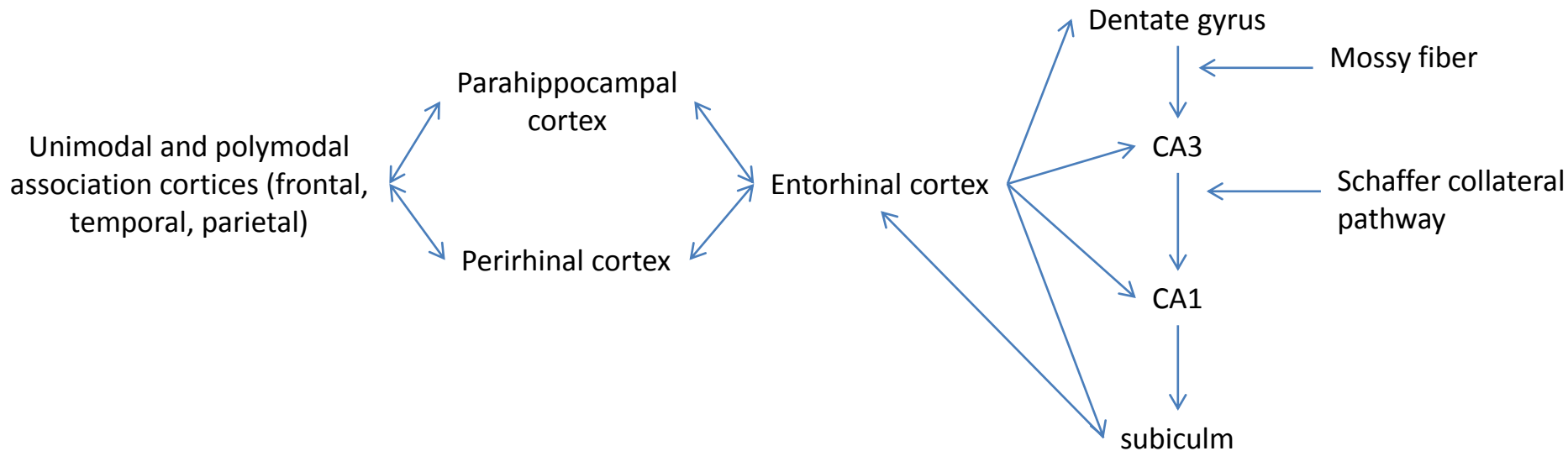
# Methodological issues: neuropsychology

- Neuro-anatomy of the medial temporal lobe



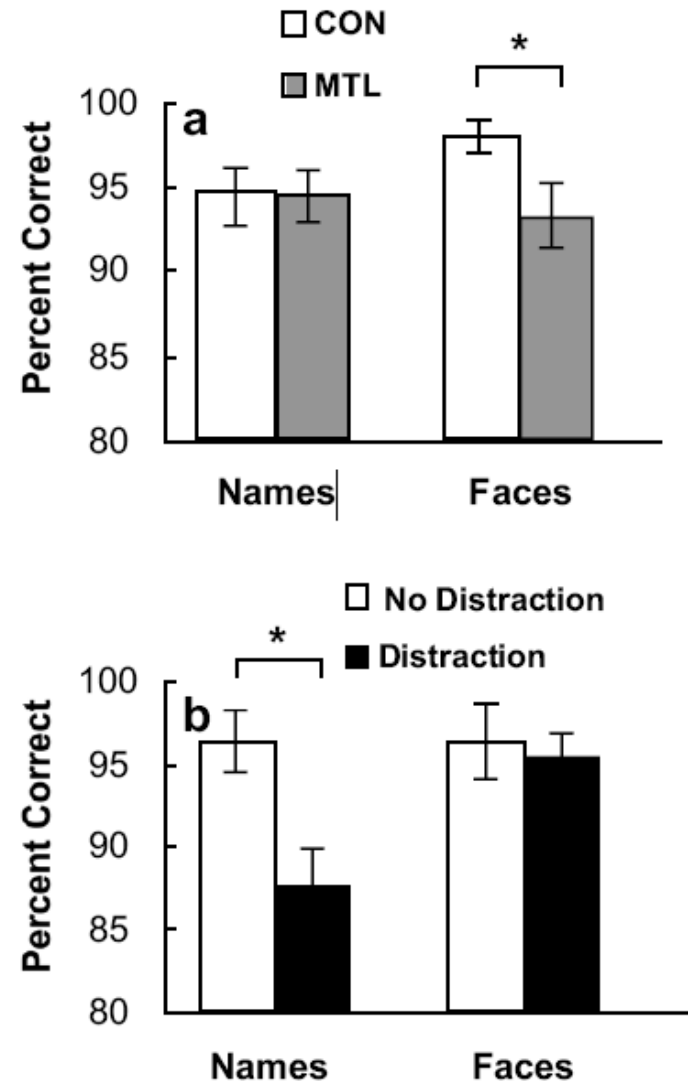
# Methodological issues: neuropsychology

- Connectivity of the hippocampal formation



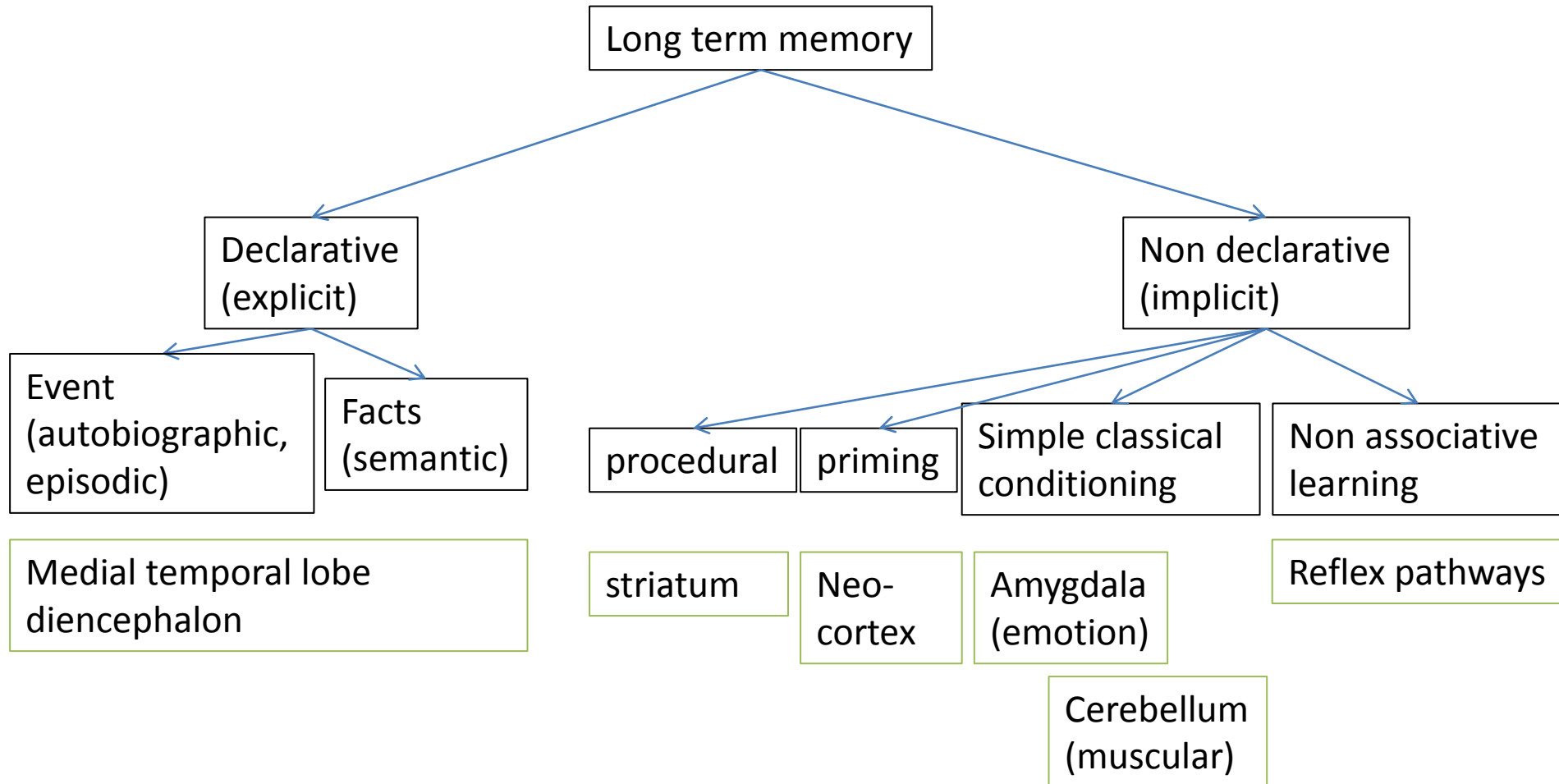
# Methodological issues: neuropsychology

- Studies in controls
- 8 medial temporal lobe patients
- 4 memory task (with delay)



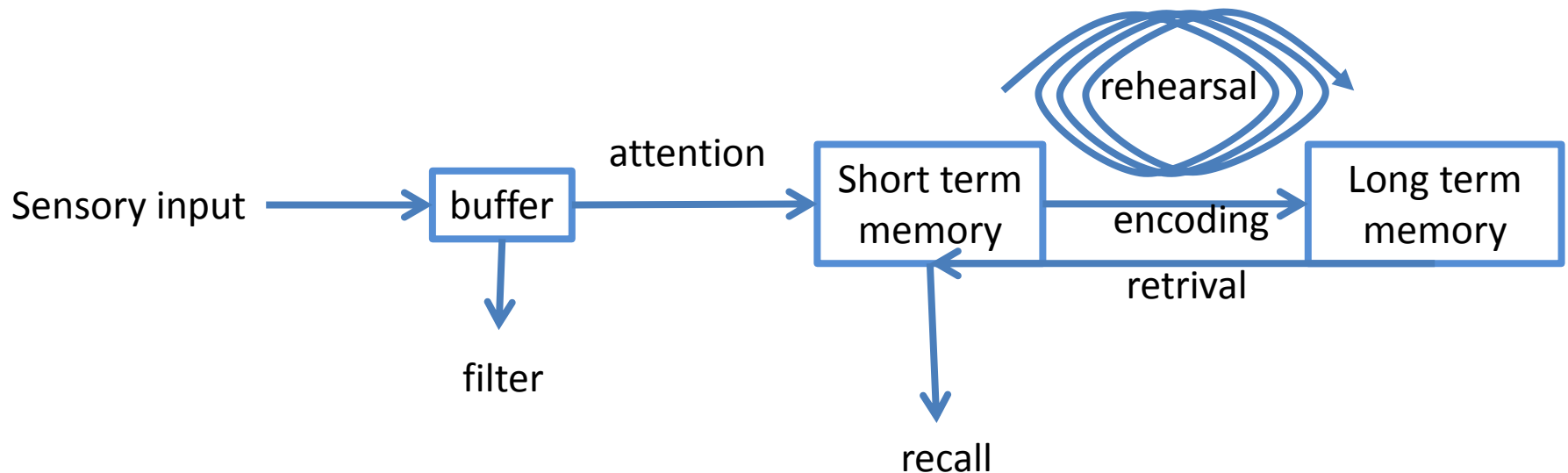
Shrager, Levy, Hopkins, Squire, J Neurosci 2008

# Long term memory



# Some classical models

- Atkinson & Shiffrin (1960s)



# Some classical models

- Tulving (1970s – 1980s)
  - The episodic memory
  - The semantic memory
  - The primary memory
  - The perceptual representation system
  - The procedural memory

# Some classical models

- Baddeley 1974

visual spatial sketch pad  $\longleftrightarrow$  Central executive system  $\longleftrightarrow$  Articulatory loop